



# MONTHLY MEMBERSHIP PROGRESS REPORT

Results as of: 10/31/2015

Multiple District 14

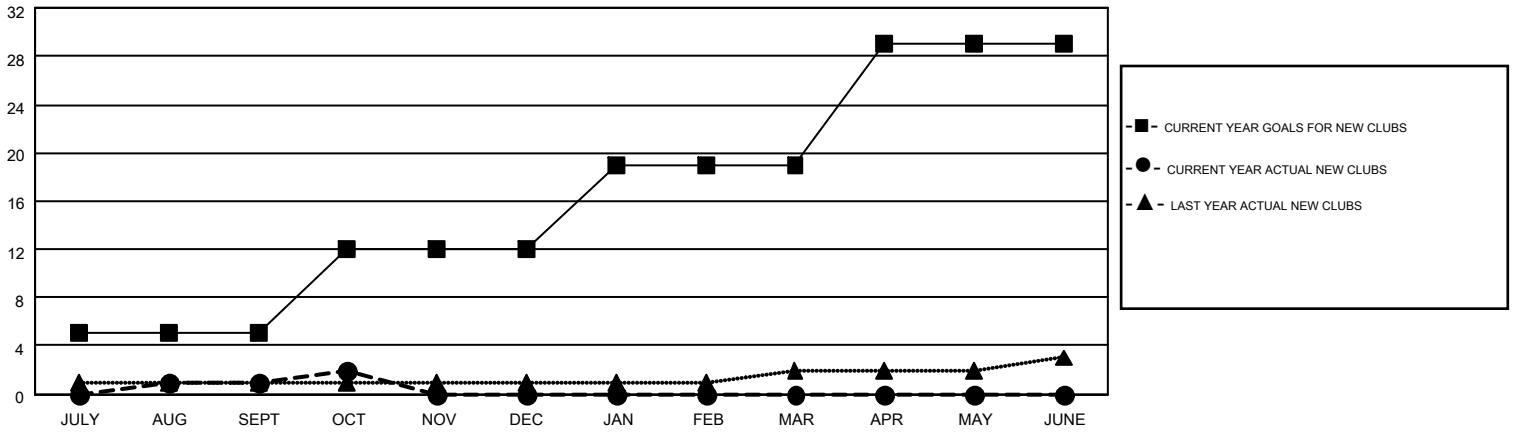
LOCATION: PENNSYLVANIA

GMT: CINDY GREGG

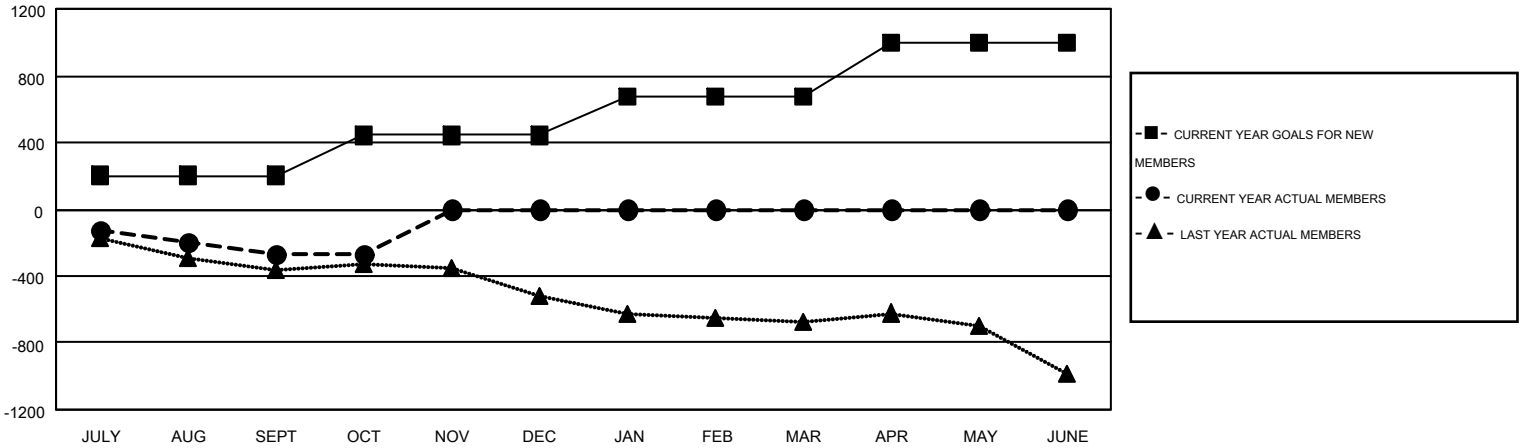
GMT CA 1

Clubs					Members				
RESULTS FOR 2015-2016					RESULTS FOR 2015-2016				
QUARTER	NEW CLUB GOAL	NEW CLUBS	DROPPED CLUBS	NET GAIN/LOSS	QUARTER	NEW MEMBER GOAL	CHARTER AND NEW MEMBERS ADDED	DROPPED MEMBERS	NET GAIN/LOSS
JULY/AUG/SEPT	5	1	8	-7	JULY/AUG/SEPT	203	308	580	-272
OCT/NOV/DEC	7	1	0	1	OCT/NOV/DEC	239	165	157	8
JAN/FEB/MAR	7	0	0	0	JAN/FEB/MAR	237	0	0	0
APR/MAY/JUNE	10	0	0	0	APR/MAY/JUNE	319	0	0	0

GOALS AND ACTUAL NEW CLUBS CUMULATIVE



GOALS AND ACTUAL MEMBERS CUMULATIVE



DROPPED CLUBS: 8	207 CLUBS OF 711 ADDED 1 OR MORE NEW MEMBERS	<u>GENDER DISTRIBUTION</u>			
<u>DROPPED MEMBERS</u>		MALE	15,274 (76.94%)		
DECEASED	121	FEMALE	4,577 (23.06%)		
CLUB CANCELLED	79	<a href="#">CLICK HERE FOR HEALTH ASSESSMENT DATA</a>			
OTHER	537			FAMILY UNIT MEMBERS	3,480
TOTAL	737			HEAD OF HOUSEHOLD	1,683
		NON-HEAD OF HOUSEHOLD	1,797		